

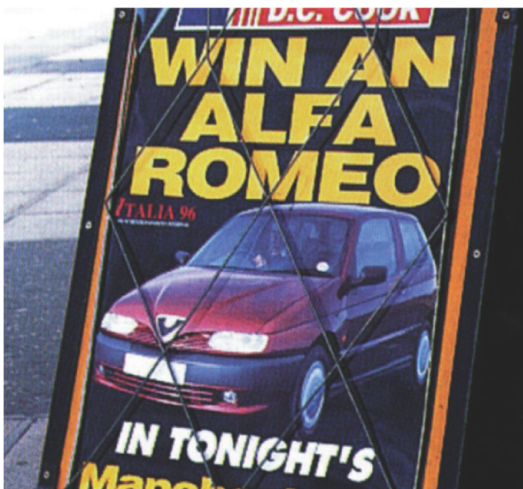


SONIC 65/ 80/ 110

Roll Laminators



**Heat Shoe Type Roll Laminator with
New Ruthenox® Heater**
Lightening-Fast Warm-up Time
Elegant Design



SONIC 65/ 80/ 110

- Temperature and Speed Control
- Simple Operation
- Able to laminate all the industrial standard films between 32mic and 250mic
- Heat shoes open up easily for easy cleaning of rollers
- Rear Cross Cutter for Web Removal
- Tension Control



GMP **GMP CO., LTD.**
www.gmp.com

SONIC 65/ 80/ 110

Roll Laminators



¥World-first Roll Laminator with less than 1 minute Warm- up Time.

¥High Performance Heat Shoe Roll Laminator for convenient use at Schools, Offices, Copy Shops, etc.

¥Heat Shoe System improves lamination of heat sensitive material.

SPECIFICATION

Model Name	SONIC-65	SONIC-80	SONIC-110
Dimensions(W×L×H,mm)	903 x 577 x 476	1,053 x 577 x 476	1,303 x 577 x 476
Laminating Width(mm)-Max	650	800	1,100
Laminating Thickness(mic)		32 ~ 250	
Weight(kg)	51	59	73
Film core diameter(mm)		25 (58mmcore)	
Laminating speed(m/min)		0.8~3	
Power consumption(W)	2,000	2,100	2,200
Operating temperature		0 ~120℃	
Driving motor		DC geared motor	
Temperature control		Time proportional control	
Heating system		Heat shoe type with Ruthenox® heater	
Power supply		220-240V, 50/60Hz	

GMP reserves the right to after change specifications without prior notice